

SLIDE VALVE CH50

CH50 is a compact valve series in modular design.

A block consists of 1 to 9 sections, an inlet element with pressure relief valve and an outlet element. The assembly is done by means of 4 tie rods.

Due to the compact modular design and the wide variety of the range, practically all needs (including electro-hydraulic or pneumatic control, regulated flow) are covered.

ADVANTAGES

- Compact Dimensions
- Simple variation possibilities due to modular design
- Extensive range - of slides and actuators
- High quality materials
- High precision manufacturing
- AVAILABLE AT SHORT NOTICE



SWIVEL FITTINGS

Swivel fittings are connecting elements that hydraulically connect stationary and rotating machine parts.

Due to different designs, materials, surface coatings and seals, our products can be used for different applications and mediums. It is also possible to customize the standard swivel fittings upon request.

Our swivel fittings help where twisting or unacceptable bending radii would occur in hoses. The service life is considerably increased by the use of swivel fittings as this greatly relieves the hoses.



Gerd Krüger Maschinenbau GmbH
Bahnhofstraße 33 - 27386 Brockel - Germany
info@krueger-maschinenbau.de
Tel: +49 4266 94117



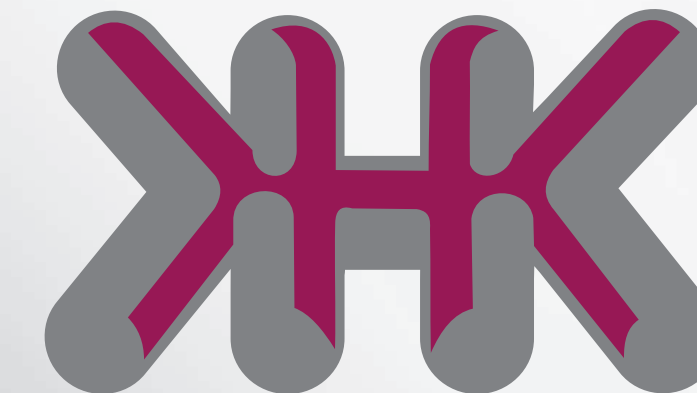
Industriebedarf Krüger GmbH
Pudelhofsweg 3 - 27386 Brockel - Germany
verkauf@khk-brockel.de
Tel: +49 4266 94105



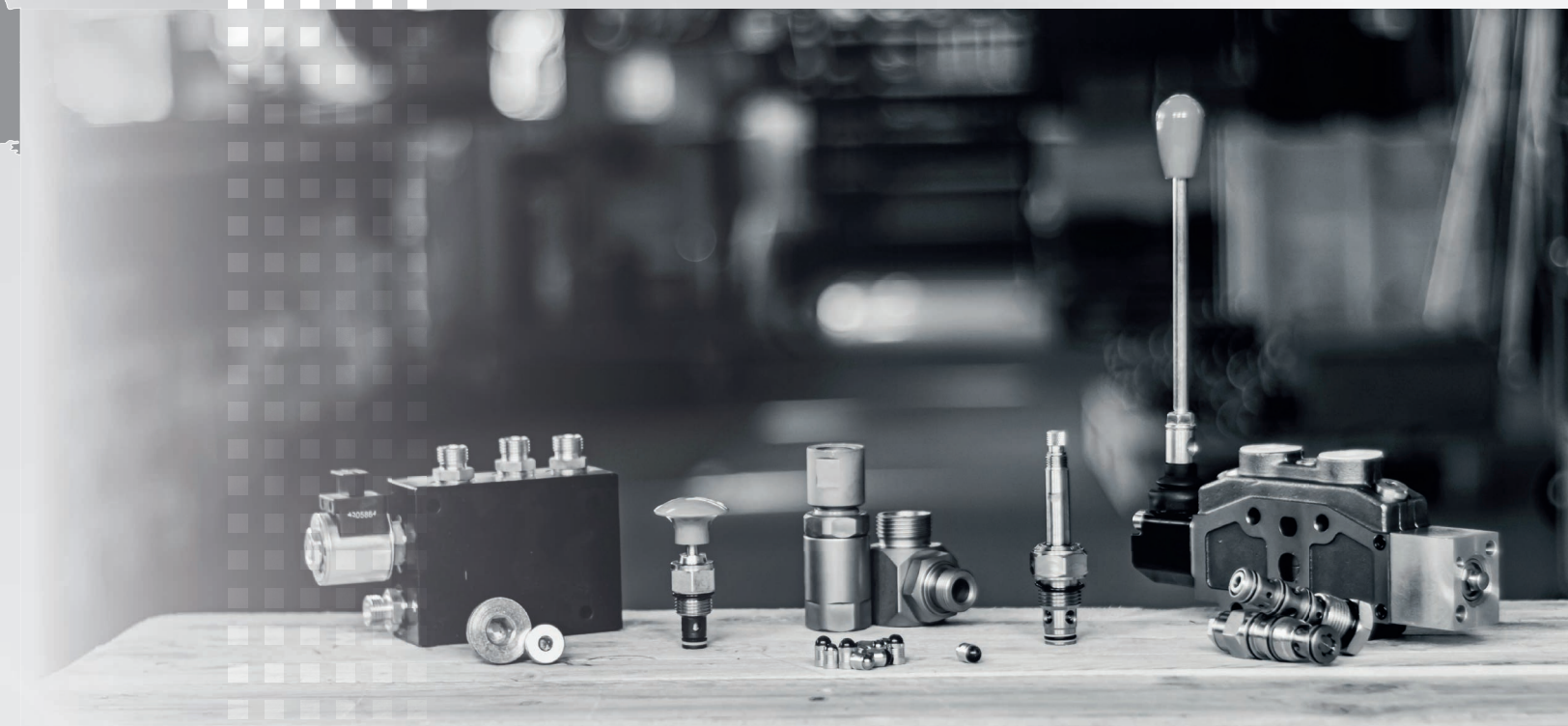
Nové Holešovice 14
Pardubice - Slepotic - CZ 53002
info@czetec.cz
Tel: +420 465 423 256



khk-group



www.khk-group.de



The KHK Group is one of the leading suppliers for swivel fittings as well as hydraulic valve and control block systems.

In addition, we offer our customers the CH50 series, a valve series that can be individually assembled from hand lever valves, as well as block plug technology and cartridge valves. Due to our high vertical range of manufacture we offer high-quality individual solutions according to customer requirements in addition to our product series.

We have over 60 years of experience in the field of hydraulics and, as a family-run, medium-sized company, we stand for cooperation based on partnership and sustainable action.

Our products are installed in construction, agricultural and municipal machines as well as in commercial vehicles and drive technology.

Every day our team of over 50 highly motivated employees at three locations in Germany and the Czech Republic works with the highest precision on qualitatively excellent products.

Our **HYDRAULIC** connects and moves

- Design and Development
- Customized Control Blocks
- Center Flanges and Center Adapters
- Piping Housings for Cartridge Valves
- Cetop Manifold Plates
- Cetop Subplates for Cartridge Valves
- LEGOFLEX for Cetop Valves

- Cetop Valves
- Motor and Pump Mounting Valves
- Hand Lever Valves CH50
- Block plug technology
- ExPlug®
- Swivel Fittings
- Cartridge Valves

Our **HYDRAULIC** connects and moves

ExPlug®

The **ExPlug®** are elements that close open connection points in a hydraulic system to prevent leakage of the medium.

The **ExPlug®** are designed for different application materials and pressure ranges.

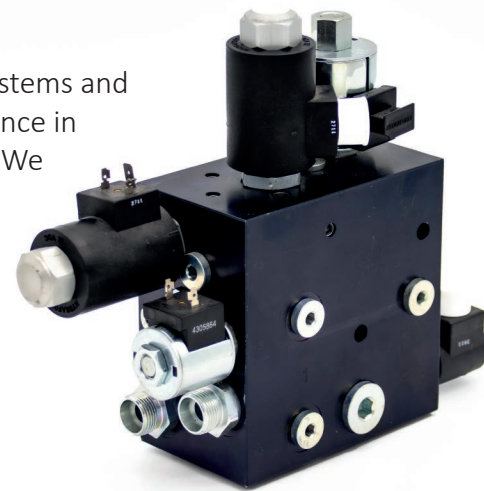
Due to different designs, materials and surface coatings, our products can be used for different areas and mediums. We can also customize the standard series upon customer request.

Since there are countless applications for **ExPlug®** it is necessary to select the appropriate design depending on the application.



BLOCK DESIGN

We offer design of hydraulic control blocks, design of hydraulic systems and production of components in our own facility. Decades of experience in hydraulics as well as great production know-how characterize us. We can process a wide range of aluminum and steel alloys as well as casting materials for you.



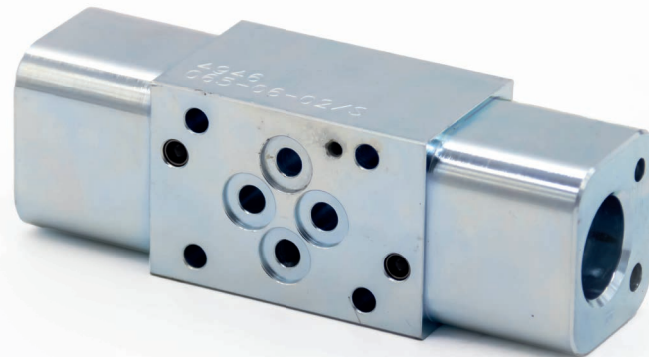
Due to continuous investments in our machinery as well as the training and further education of our employees, we can always offer you technically high-quality solutions. In the CAD-supported design department, our specialists develop customer-specific solutions.

We offer you design, production and component assembly (including cartridge valves and block sealing technology) as a system solution from a single source.

MANIFOLDS

We carry piping housings/manifolds and intermediate plates for the screw-in mounting holes of the cartridge valves and connections commonly used on the market in our product range.

Consultation, teamwork and know-how are the cornerstone of a good cooperation.



CARTRIDGE VALVES

In the field of screw-in valves we offer pressure control valves, load holding valves, proportional valves, logic valves, flow control valves, directional control valves and solenoid valves.

If necessary we can also supply alternatives to the valves of the common manufacturers.

Please feel free to inquire about your requirements!



The advantages of these designs are quickly listed:

-They are flexible in application, many functions can be achieved.

-Cartridge valves usually have low weight and can be designed compactly.

-They have low leakage oil flow and offer a high switching speed.



1961

Founding of the company Gerd Krüger Maschinenbau by Gerd Krüger

1967

Gerd Krüger passes diploma in mechanical engineering

1972

Construction of a new production hall in Brockel

1977

Establishment of Gerd Krüger Maschinenbau GmbH

1984

Development of rotary swivel fittings

1986

Acquisition of the first CNC lathe machine for complete machining

1995

Establishment of Industriebedarf Krüger GmbH by Michaela and Karlheinz Krüger

1997

Establishment of Czetec spol. s.r.o in Vysoké Mýto with Martin Kytlic as Managing Director

1998

Czetec acquires the first CNC machining center

2003

Launch of the KHK-Group

2003

Start of the BVT-Production (today ExPlug)

2013

Relocation of Czetec to the commercial facility in Slepotice

2015

Start of production of the Legoflex-program

2015

Acquisition of a 3D measuring machine

2016

Expansion of assembly through extension at the Slepotice site

2016

Czetec acquires a horizontal machining center with pallet pool

2018

Takeover of Gerd Krüger Maschinenbau by Karlheinz Krüger

2020

Acquisition of the CH50 series from the Chapel company

2022

Construction of a new office and production building in Rotenburg (Wümme)

